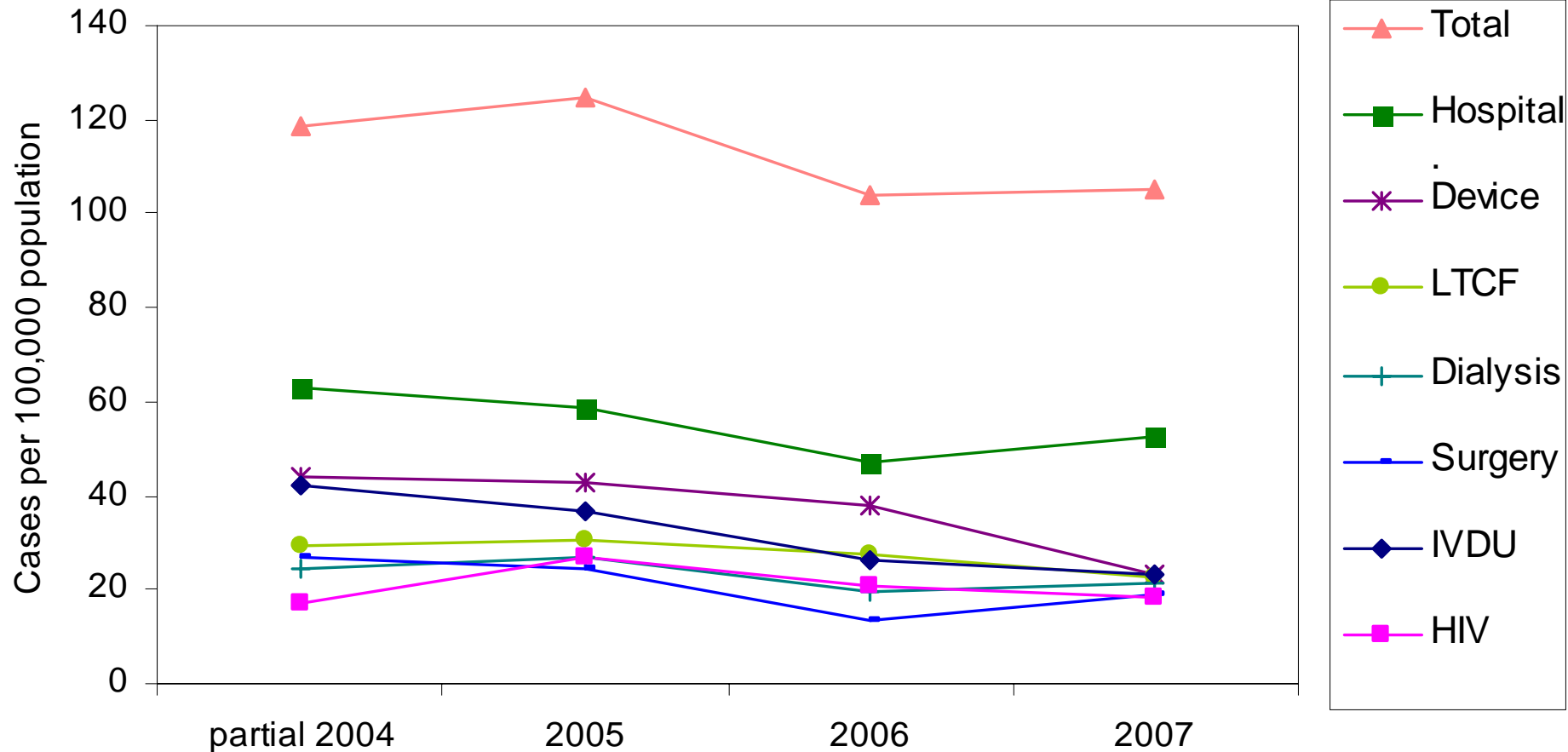


Rates of invasive MRSA in Baltimore City, 2004 to 2007, according to select possible risk factors



MRSA=Methicillin-resistant *Staphylococcus aureus*. Data are from the Maryland component of the CDC's Active Bacterial Core surveillance system. Rates are based on the total population and exclude recurring cases in the same person in the same calendar year. Possible risk factors are: Hospital=hospitalization in the past 12 mo., Device=invasive device/catheter at admission, LTCF=Long-term care facility in the past 12 mo., Dialysis=dialysis in the past 12 mo., IVDU=Intravenous drug use, HIV=HIV infection. Each case can involve multiple possible risk factors.