

Testing of Children's Jewelry by the Baltimore City Health Department Summer 2006

The jewelry collected for the testing was purchased from various retailers throughout the City of Baltimore during the months of July and August 2006. The laboratory used for testing was Penniman & Browne, Inc. of Baltimore, Maryland. The testing methodology was the protocol of the Consumer Product Safety Commission for total lead analysis. There may be variability in the materials used for these products, which could affect lead content and testing results.

1



Purchased From: Dollar Store - 2445 Frederick Road
Price: \$0.25
Description of Item Tested: metal ring with paint from vending machine
Total Lead Content: 32.33 mg/Kg

2



Purchased From: Claire's - 200 E. Pratt Street
Price: \$3.00
Description of Product: Claire's Club: "dance necklace"
a) Description of Item Tested: necklace chain, 2 links
Total Lead Content: 49.01 mg/Kg
b) Description of Item Tested: dance pendant
Total Lead Content: 129.6 mg/Kg
c) Description of Item Tested: clasp dangle
Total Lead Content: 147.4 mg/Kg
d) Description of Item Tested: shoe with paint, pink
Total Lead Content: 103 mg/Kg

3



Purchased From: Claire's - 200 E. Pratt Street

Price: \$3.00

Description of Product: Claire's Club: "dance necklace"

a) Description of Item Tested: necklace chain, 2 links

Total Lead Content: 51.22 mg/Kg

b) Description of Item Tested: dance pendant

Total Lead Content: 137.7 mg/Kg

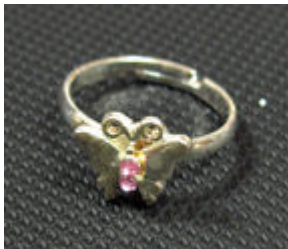
c) Description of Item Tested: clasp dangle

Total Lead Content: 155.5 mg/Kg

d) Description of Item Tested: shoe with paint, blue

Total Lead Content: 112.8 mg/Kg

4



Purchased From: Claire's - 200 E. Pratt Street

Price: \$5.50

Description of Product: Claire's Club - Set of 7 rings

Description of Item Tested: ring band with butterfly

Total Lead Content: 156.7 mg/Kg

5



Purchased From: Claire's - 200 E. Pratt Street

Price: \$5.50

Description of Product: Claire's Club - Set of 7 rings

Description of Item Tested: ring band with cross

Total Lead Content: 167.3 mg/Kg

6



Purchased From: Claire's - 200 E. Pratt Street

Price: \$5.50

Description of Product: Claire's Club - Set of 7 rings

Description of Item Tested: ring with cherries, paint

Total Lead Content: 682.2 mg/Kg

7



Purchased From: Claire's - 200 E. Pratt Street

Price: \$5.50

Description of Product: Claire's Club - Set of 7 rings

Description of Item Tested: ring band with bug, paint

Total Lead Content: 426.7 mg/Kg

8



Purchased From: Claire's - 200 E. Pratt Street
Price: \$5.50
Description of Product: Claire's Club - Set of 7 rings
Description of Item Tested: ring band with heart, paint
Total Lead Content: 175.2 mg/Kg

9



Purchased From: Claire's - 200 E. Pratt Street
Price: \$5.50
Description of Product: Claire's Club - Set of 7 rings
Description of Item Tested: ring with flower
a) Tested Piece: ring band with flower
Total Lead Content: 622.5 mg/Kg
b) Tested Piece: flower
Total Lead Content: 874.5 mg/Kg
c) Tested Piece: ring band
Total Lead Content: 74.34 mg/Kg
d) Tested Piece: ring band with solder
Total Lead Content: 73.44 mg/Kg

10



Purchased From: Claire's - 200 E. Pratt Street
Price: \$5.50
Description of Product: Claire's Club - Set of 7 rings
Description of Item Tested: ring band with pink butterfly
Total Lead Content: 517.1 mg/Kg

11



Purchased From: Claire's - 200 E. Pratt Street
Price: \$4.50
Description of Product: Claire's Club: Princess Collection
- 3 piece set: necklace, bracelet and ring
Description of Item Tested: ring with pearl
a) Tested Piece: back of ring band, clasp area
Total Lead Content: 68,071.5 mg/Kg
b) Tested Piece: ring band
Total Lead Content: 7,106.6 mg/Kg
c) Tested Piece: ring band
Total Lead Content: 176.3 mg/Kg
d) Tested Piece: pearl setting with paint
Total Lead Content: 24,305.5 mg/Kg
e) Tested Piece: ring band
Total Lead Content: 179.9 mg/Kg
f) Tested Piece: ring band
Total Lead Content: 168.4 mg/Kg

12



Purchased From: Wal-Mart - 2701 Port Covington Drive

Price: \$7.00

Description of Product: The Barbie Diaries - 2 charm bracelets and jewelry box

a) Description of Item Tested: gold bracelet with charms

1) Tested Piece: gold star with clasp and paint

Total Lead Content: 72.7 mg/Kg

2) Tested Piece: gold "B" with clasp and paint

Total Lead Content: 79.9 mg/Kg

3) Tested Piece: gold heart with wings, clasp, paint

Total Lead Content: 53.0 mg/Kg

4) Tested Piece: silver lightening bolt, clasp, paint

Total Lead Content: 188.0 mg/Kg

5) Tested Piece: gold chain with clasp

Total Lead Content: 182.0 mg/Kg

b) Description of Item Tested: silver bracelet, clasp, paint

1) Tested Piece: silver flower, clasp, paint

Total Lead Content: 109.0 mg/Kg

2) Tested Piece: silver star with rainbow, clasp, paint

Total Lead Content: 107.0 mg/Kg

3) Tested Piece: silver guitar, clasp, paint

Total Lead Content: 85.4 mg/Kg

4) Tested Piece: silver butterfly, clasp, paint

Total Lead Content: 60.1 mg/Kg

5) Tested Piece: silver chain with clasp

Total Lead Content: 233.0 mg/Kg



13



Purchased From: Wal-Mart - 2701 Port Covington Drive

Price: \$3.82

Description of Product: Girl Connection - fairy necklace and 3 rings

a) Description of Item Tested: ring with pink flower

Total Lead Content: 183.0 mg/Kg

b) Description of Item Tested: fairy necklace with pink gemstone wings

1) Tested Piece: fairy with pink wings

Total Lead Content: 86.6 mg/Kg

2) Tested Piece: silver chain with clasp

Total Lead Content: 118.0 mg/Kg

c) Description of Item Tested: ring with paint, sparkles

Total Lead Content: 244.0 mg/Kg

d) Description of Item Tested: silver ring with 4 hearts

Total Lead Content: 3,540.0 mg/Kg



14



Purchased From: Wal-Mart - 2701 Port Covington Drive

Price: \$3.82

Description of Product: Girl Connection - "Forever Friends" necklaces

a) Description of Item Tested: silver "Friends" necklace

1) Tested Piece: silver "friends" charm with paint

Total Lead Content: 83.4 mg/Kg

2) Tested Piece: chain with clasp

Total Lead Content: 95.6 mg/Kg

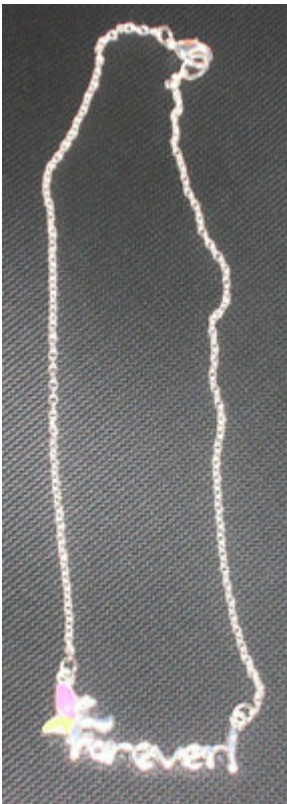
b) Description of Item Tested: silver "Forever" necklace

1) Tested Piece: silver "forever" charm with paint

Total Lead Content: 27.5 mg/Kg

2) Tested Piece: silver chain with clasp

Total Lead Content: 86.6 mg/Kg



15



Purchased From: Pro-Discount Store - 565 Old Town Mall

Price: \$0.95

Description of Product: Little Angel - hair barrettes

a) Description of Item Tested: blue barrette

Total Lead Content: 55.2 mg/Kg

b) Description of Item Tested: green barrette

Total Lead Content: 50.1 mg/Kg

c) Description of Item Tested: brown barrette

Total Lead Content: 52.4 mg/Kg

16



Purchased From: Family Dollar - 30 W. North Avenue

Price: \$1.20

Description of Product: Distinctly Basics by Rachael Rose - 10 bangles and 2 rings

a) Description of Item Tested: gold bracelet

Total Lead Content: 79.2 mg/Kg

b) Description of Item Tested: gold ring band

Total Lead Content: 164.0 mg/Kg

17



Purchased From: K-Mart - 5760 Wabash Avenue

Price: \$10.50

Description of Product: Disney Princesses: Charm Treasures Collections (Cinderella and Belle)

a) Description of Item Tested: princess bracelet

Total Lead Content: 45.1 mg/Kg

b) Description of Item Tested: Cinderella charm

Total Lead Content: 7.21 mg/Kg

c) Description of Item Tested: high heel slipper charm

Total Lead Content: 8.72 mg/Kg

d) Description of Item Tested: rose charm

Total Lead Content: 7.92 mg/Kg

e) Description of Item Tested: oval charm with gem

Total Lead Content: 5.65 mg/Kg

d) Description of Item Tested: Belle charm

Total Lead Content: 7.48 mg/Kg