

Baltimore Plant
Agricultural Division
Allied Chemical Corporation
Swann Park Soil Sampling
February 25, 1976

SP24

SAMPLING - SWANN PARK

I PURPOSE

As part of the definitional program designed to identify the environmental impact of the operations at the Baltimore Plant, soil sampling of Swann Park was undertaken. The sampling was planned to provide a representative profile of the entire Park area. Kepone and Arsenic were the parameters analyzed.

II SUMMARY OF RESULTS

All analysis have been completed for both Arsenic and Kepone at Baltimore Works. Certain samples were also analyzed at Hopewell, Virginia at the Chemical Plant of Fibers Division. Those results are also included.

We have no explanation for the high figure indicated at site #12 by Hopewell as both our surface and core samples indicate a much lower level.

not clear if deeper samples were taken

Results are summarized in the attached Table I.

Table IA indicates the Kepone results as determined by Hopewell.

Table II indicates averages as we move across the field from the plant.

III METHOD AND LOCATION OF SAMPLING

The sampling was done of February 25, 1976 between 8:30 A.M. and 12:30 P.M. During the period, the weather was clear, sunny and mild with a light breeze blowing out of the North-west. Samples were taken

- 2 -

from the surface. Maximum sampling depth was 1-2 inches. Extraneous fibrous material was removed. The samples were mixed and split into two portions. Baltimore Plant did the analyses for Arsenic on one-half and the remaining half was sent to the Fibers Division Laboratory, Hopewell, Virginia, for the Kepone analyses.

The attached Sketches "A" and "B" depict the samples locations in the Park with the distances between sampling points and the sample results for each point being listed. The relationship of the Park area to the Plant is indicated. Sketch "A" gives the Kepone results and "B" the Arsenic.

IV ANALYTICAL METHODS

Methods used for soil sample preparation and analytical procedures for Arsenic and Kepone analyses are included in a separate procedure manual.

Prepared by: E. F. Hawkins
E. F. Hawkins
Technical Supervisor
Baltimore Plant

Reviewed by: J. M. DeVoe
J. M. DeVoe
Environmental Coordinator

CONFIDENTIAL & PRIVILEGED - PREPARED AT THE REQUEST OF COUNSEL

TABLE I

<u>Sample No.</u>	<u>Kepona (ppm)</u>	<u>As (ppm)</u>	<u>Sample No.</u>	<u>Kepona (ppm)</u>	<u>As (ppm)</u>
1	15	6600	24	17	540
2	12	2340	25	16	1130
3	11	1390	26	12	824
4	9	416	27	10	62
5	10	1950	28	11	880
6	13	1480	29	11	26
7	15	1600	30	18	28
8	17	3060	31	3	42
9	9	220	32	1.5	54
10	21	620	33	2	56
11	16	1400	34	2	72
12	10	1300	35	3	426
13	25	1966	36	3	100
14	10	1346	37	4	12
15	6	700	38	5	70
16	6	177	39	6	160
17	4	280	40	5	150
18	4	210	41	6	132
19	22	804	42	25	80
20	16	356	43	4	40
21	16	300	44	2	175
22	15	1590	45	2.5	92
23	17	250			

CONFIDENTIAL & PRIVILEGED - PREPARED AT THE REQUEST OF COUNSEL

TABLE IA

<u>Sample No.</u>	<u>Kepona (ppm)</u>	<u>Sample No.</u>	<u>Kepona (ppm)</u>
S-1		S-24	0.12
S-2	3.5	S-25	
S-3		S-26	1.5
S-4	0.14	S-27	
S-5		S-28	5.8
S-6	6.3	S-29	
S-7		S-30	0.16
S-8	41	S-31	
S-9		S-32	0.25
S-10	21	S-33	
S-11		S-34	0.32
S-12	930, 970	S-35	
S-13		S-36	0.50
S-14		S-37	
S-15	19	S-38	0.20
S-16	0.03	S-39	
S-17		S-40	0.50
S-18	1.1	S-41	
S-19		S-42	1.3
S-20	3.9	S-43	
S-21		S-44	2.1
S-22	2.5	S-45	
S-23			

TABLE II

From these results Kepone and Arsenic results averaged as follows:

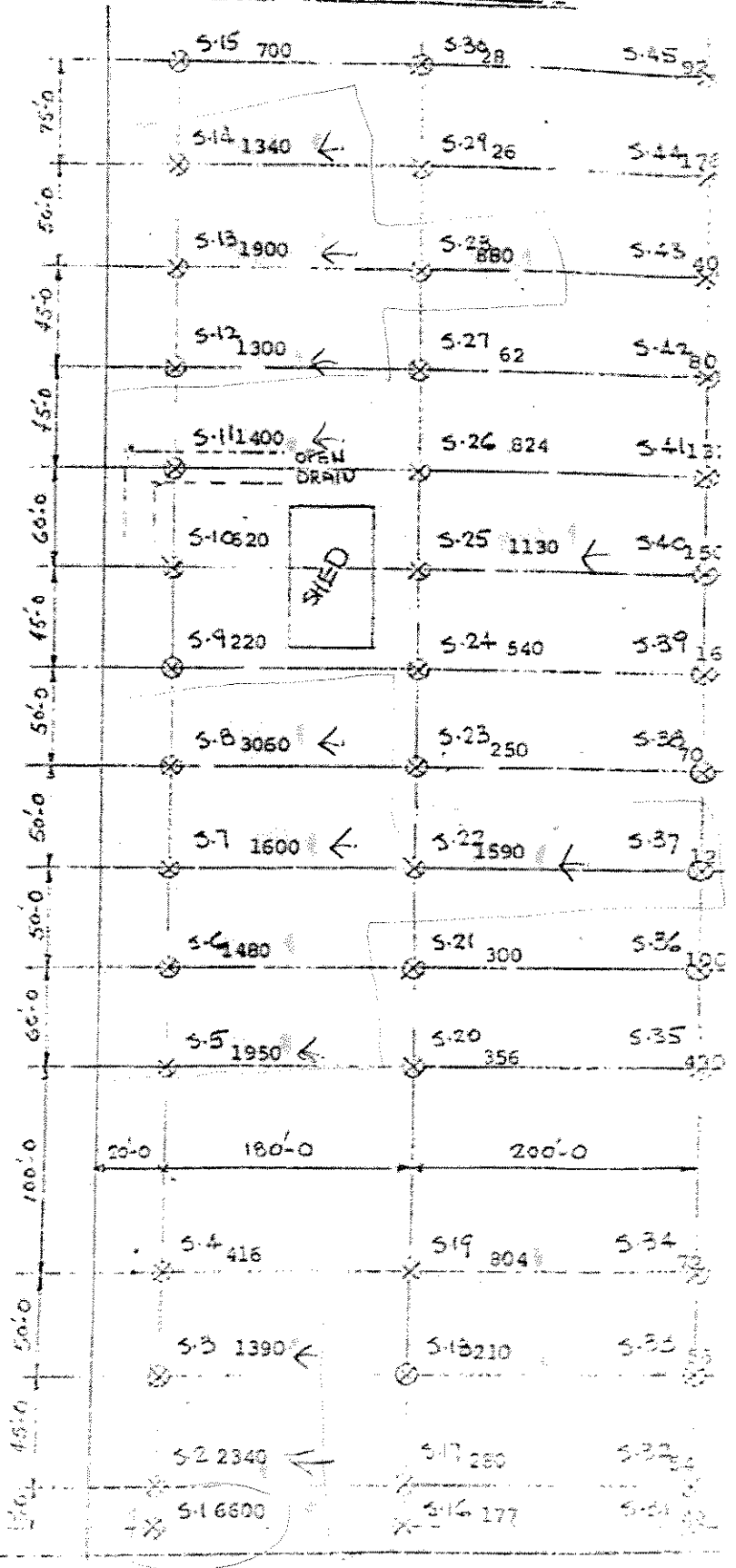
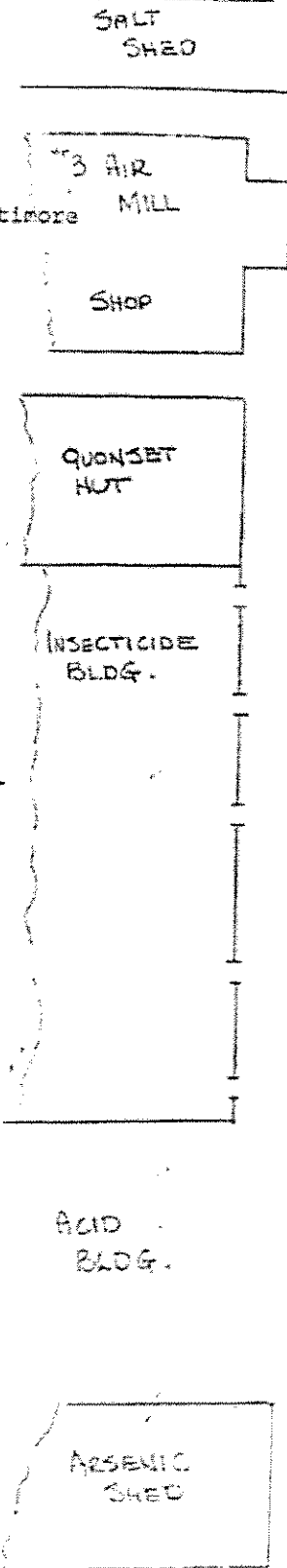
	<u>Kepone (ppm)</u>	<u>Arsenic (ppm)</u>
S-1 - S-15	13	1760
S-16 - S-30	13	497
S-31 - S-45	3.4	110

SWANN PARK - SAMPLE LOCATIONS

LEGEND:

⊗ S- (SAMPLE LOCATIONS)

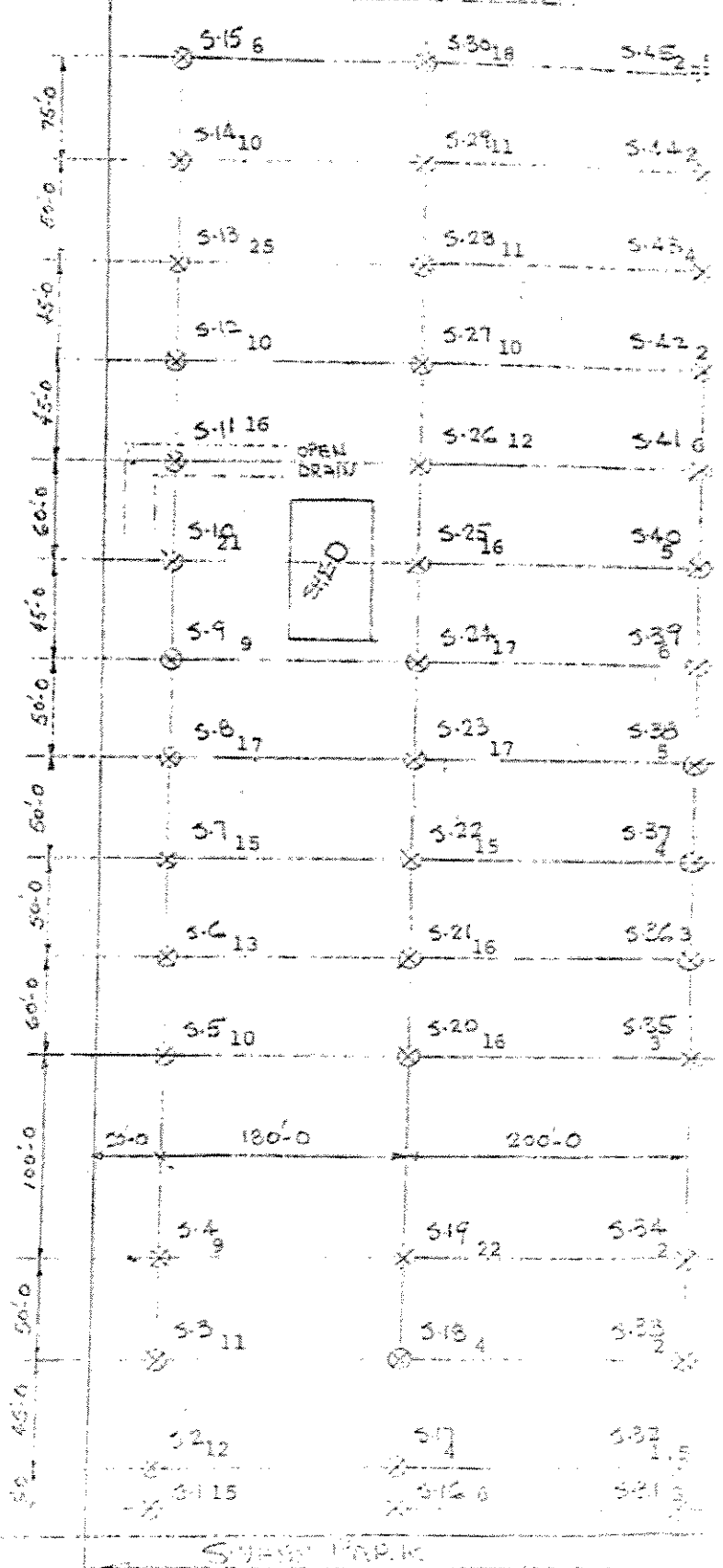
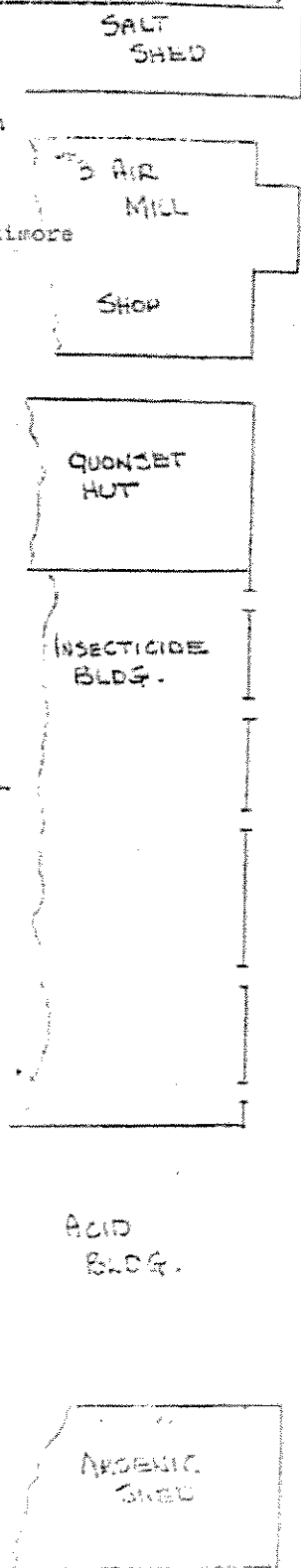
Sketch "B"
ppm Arsonic
Taken 2/20/78
Sampled by
E. F. Hawkins
Analysis at Baltimore



D'WANN PARK - SAMPLE LOCATIONS

LEGEND:
 ⊗ S- (SAMPLE LOCATIONS)

Sketch "A"
 ppm Kepone taken
 2/20/76
 Sampled by E. F.
 Hawkins
 Analysis at Baltimore



D'WANN PARK

SWANN PARK - SAMPLE LOCATIONS

LEGEND:

⊗ S- (SAMPLE LOCATIONS)

