

Maternal and Infant Health

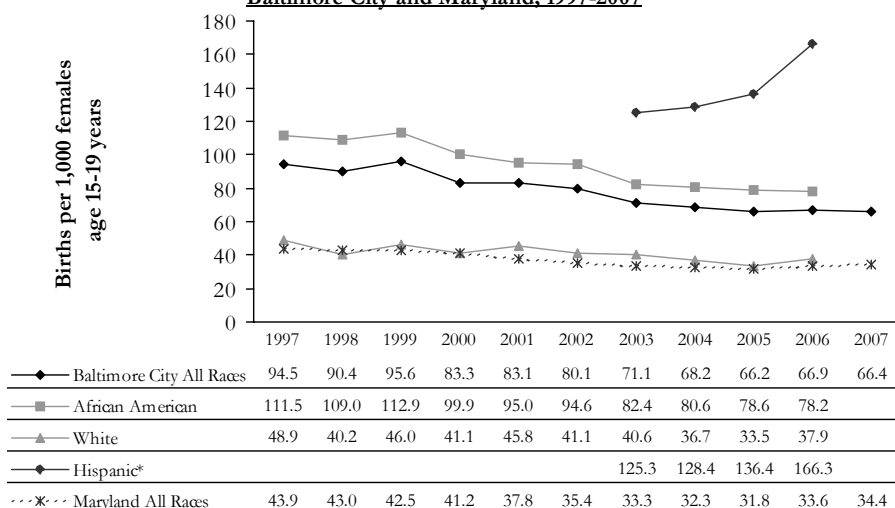
Teen Births

Teen Birth Rate: The number of births per 1,000 females age 15-19 years

Importance: Pregnant teenagers are less likely to receive proper prenatal care and therefore more likely to experience poor birth outcomes compared to older mothers.

National statistic: In 2006, rate of 41.9 live births per 1,000 women aged 15-19 years

Teen Birth Rate, Baltimore City by Race and Ethnicity, Baltimore City and Maryland, 1997-2007



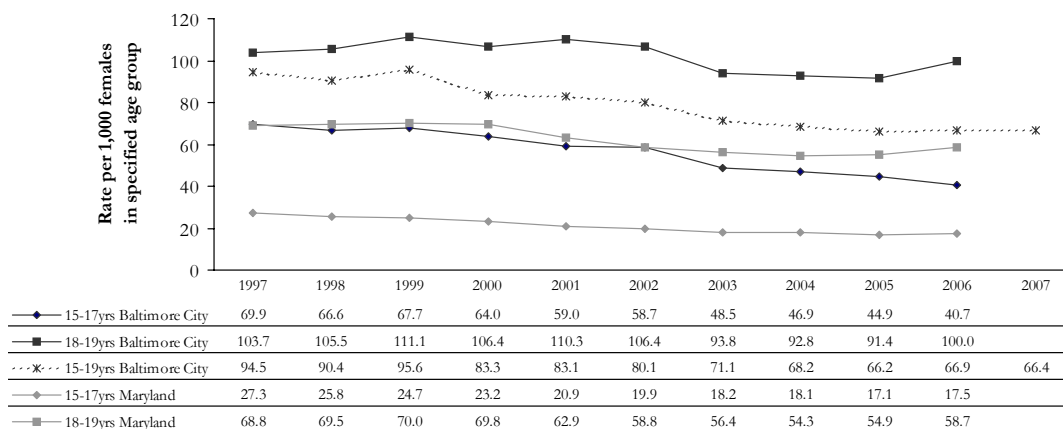
Source: Maryland Department of Health and Mental Hygiene, Vital Statistics Annual Report (2007 data are preliminary and not yet available by race/ethnicity). *Includes all births to mothers of Hispanic origin of any race, data not available prior to 2003 (Data for other races not available due to a small number of events).

- Since the early nineties, the teen birth rate has declined dramatically in Baltimore City (an overall ten-year decline of 30% and an average decline of about 4% per year since 1997). This decline has been driven by the substantial decline in births to African American teens (a 30% decrease over the past decade). Since 1997, teen births among white teens in Baltimore city decreased by 23%. From 2003 to 2006 births to Hispanic teens have increased by 33% (see note on previous page about Hispanic birth rates).
- Baltimore City's teen birth rate was two times greater than Maryland's rate and 1.6 times greater than the national rate in 2006.

- In 2006, the birth rate to Baltimore City teens increased for the first time since 1999.
- The increase occurred primarily among white and Hispanic teens (rates increased by 13% and 22% in these groups respectively) and among older Baltimore City teens (the rate among 18-19 year olds increased by almost 10% while it decreased by almost 10% among 15-17 year olds.)

- The US teen birth rate also increased in 2006, (for the first time since 1991), however that increase was larger than that seen in Baltimore: 3% nationwide vs. 1% in Baltimore (3% from 2005 to 2006).
- Preliminary data for 2007 suggest that the teen birth rate in Baltimore City has decreased slightly since 2006.

Teen Birth Rates by Age Group, Baltimore City and Maryland, 1997-2007



Source: Baltimore City Health Department analysis of data from the Maryland Department of Health and Mental Hygiene, Vital Statistics Annual Report (2007 data are preliminary and not yet available by race/ethnicity). Age-Specific Rates calculated using population denominators from CDC WONDER; United States Department of Health and Human Services (US DHHS), Centers for Disease Control and Prevention (CDC), National Center for Health Statistics (NCHS), Bridged-Race Population Estimates, United States July 1st resident population by state, county, age, sex, bridged-race, and Hispanic origin, compiled from 1990-1999 bridged-race intercensal population estimates and 2000-2006 (Vintage 2006) bridged-race postcensal population estimates, on CDC WONDER On-line Database, September 2007. Accessed at <http://wonder.cdc.gov/bridged-race+2006.html> on Jun 28, 2008.