

Infectious Diseases

HIV/AIDS

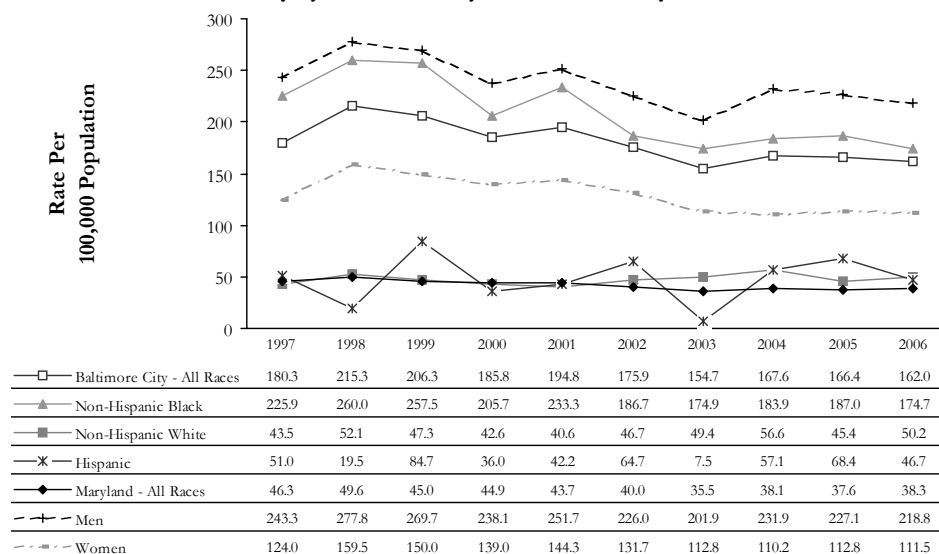
Importance: Incurable infectious disease that is fatal if not treated appropriately

National Statistic: 23.2 new HIV cases per 100,000 per year

Healthy People 2010 goal: AIDS: 1.0 new cases per 100,000

HIV Incidence (newly diagnosed cases)

HIV Incidence Rate Per 100,000 Population, Baltimore City by Race/Ethnicity and Sex, and Maryland 1997-2006

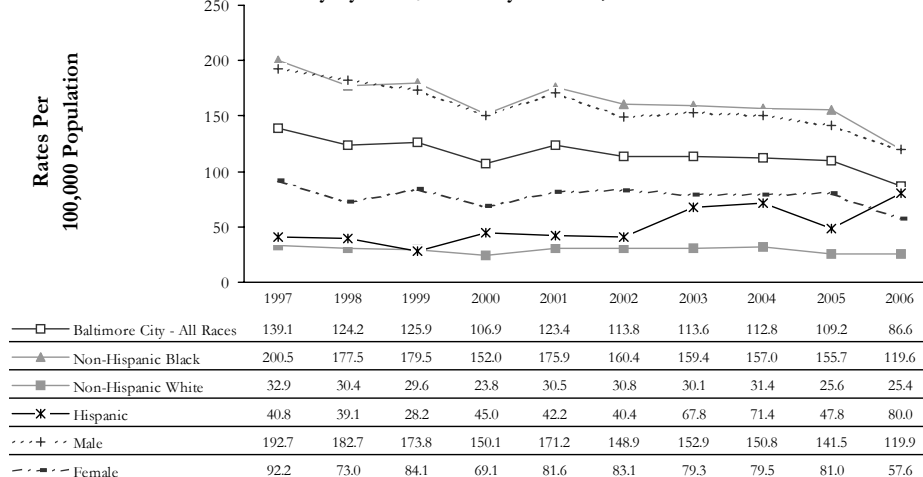


Source: Maryland Department of Health and Mental Hygiene, AIDS Administration, Center for Surveillance and Epidemiology
HIV incident (new) cases as reported through 9/30/2007

- Over the past decade, the rate of newly diagnosed HIV infection has decreased by 10% in Baltimore City.
- The decrease has been most pronounced among non-Hispanic Blacks—over 20% during this same period. The HIV incidence rate among non-Hispanic whites, however, has remained relatively stable over the past 10 years.
- Over the past decade, men were on average two times as likely to become infected with HIV compared to women.
- The number of individuals living with HIV or AIDS (prevalence) in Baltimore City has more than doubled since 1997. In 2006, 15,990 Baltimore City residents were living with HIV/AIDS (a prevalence rate of 2,532.6 per 100,000).

AIDS Incidence (newly diagnosed cases)

AIDS Incidence Rates Per 100,000 Baltimore City by Race/Ethnicity and Sex, 1997-2006



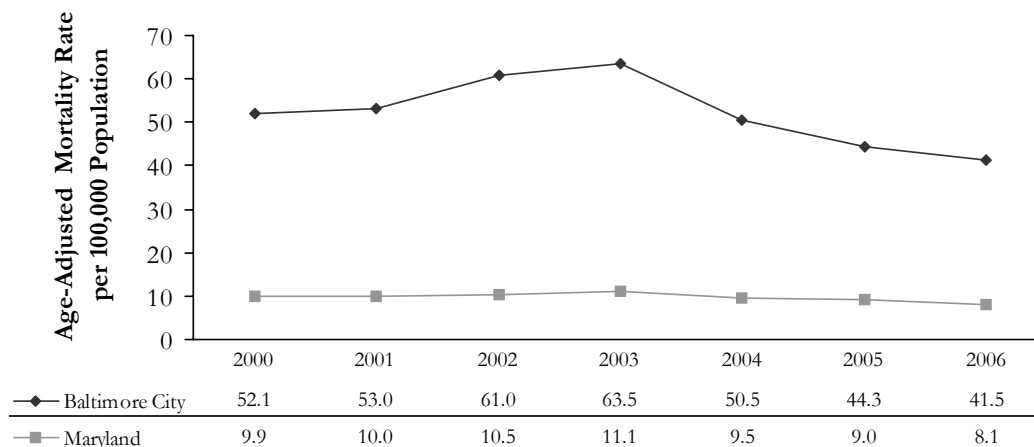
Source: Maryland Department of Health and Mental Hygiene, AIDS Administration, Center for Surveillance and Epidemiology
AIDS Incidence (new) Cases as Reported through 9/30/2007

- Over the past decade, the yearly rate of new AIDS cases has decreased by 38% in Baltimore City.
- AIDS incidence has decreased by 40% among non-Hispanic Blacks and 23% among non-Hispanic whites since 1997. The rate among Hispanics has almost doubled since 1997. (Note: The small number of cases and uncertainty of the population estimate for this group could lead to unstable rates.)
- Over the past decade, the rate of new AIDS cases was on average 2 times greater among men compared to women.

Infectious Diseases

HIV/AIDS Mortality

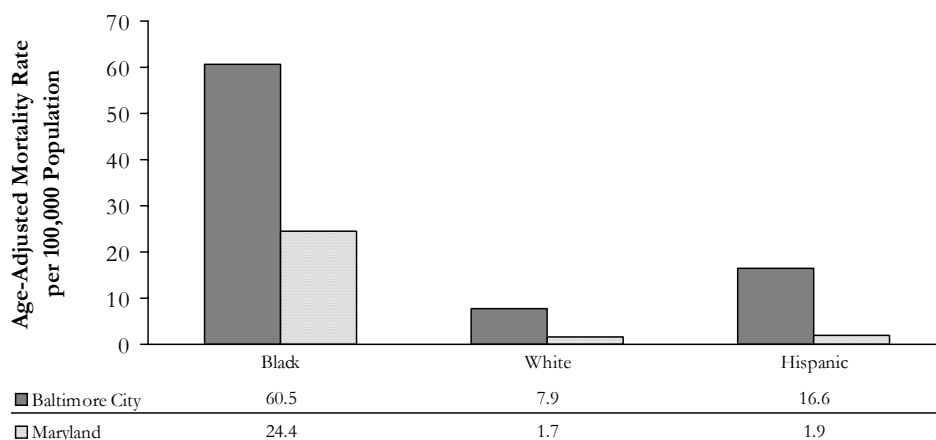
**HIV/AIDS: Age-Adjusted Mortality Rates,
Baltimore City and Maryland, 2000-2006**



Source: Maryland Department of Health and Mental Hygiene - Maryland Vital Statistics Annual Report; Baltimore City Health Department analysis of data from the Baltimore City Vital Statistics Profile.

- On average over the past seven years, Baltimore City's age-adjusted HIV/AIDS mortality rate has been over 5 times greater than the rate among Maryland residents.
- Mortality from HIV/AIDS increased 22% in Baltimore and 12% in Maryland between 2000 and 2003, then decreased 35% and 27% in Baltimore and Maryland, respectively, between 2003 and 2006.
- Since 1998, the median age of death due to AIDS has increased from 43 to 48 years (data not shown).

**HIV/AIDS: Age-Adjusted Mortality Rates by Race,
Baltimore City and Maryland, 2006**



Source: Maryland Department of Health and Mental Hygiene, Vital Statistics Administration - 2006 Maryland Vital Statistics Annual Report; and Baltimore City Health Department analysis of data from the 2006 Maryland Vital Statistics Profile and the 2006 Baltimore City Vital Statistics Profile.

- In 2006, Baltimore City African Americans had an HIV/AIDS mortality rate that was almost 8 times higher than the rate among whites; Hispanics had a rate that was 2 times higher.
- In 2006, Hispanics, whites, and African Americans in Baltimore City had a higher age-adjusted mortality rate due to HIV/AIDS compared to these groups statewide by factors of 9, 5, and 2.5, respectively.

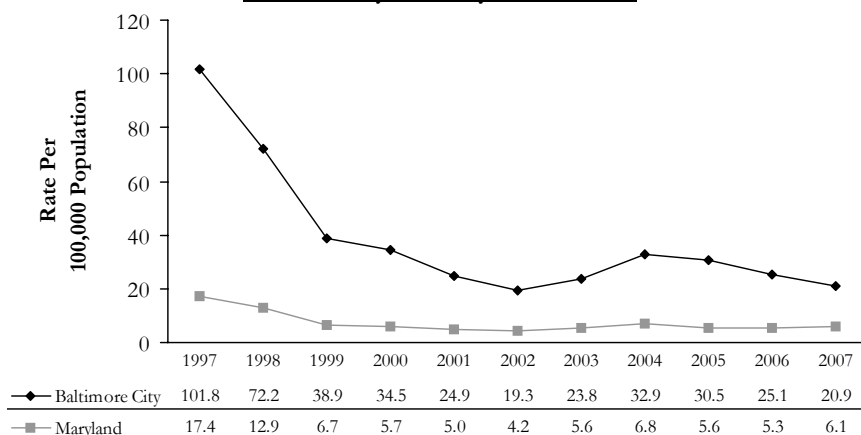
Sexually Transmitted Infections (STIs)

Syphilis

Importance: Highly infectious; if untreated, can cause fatal organ, neurological, and cardiovascular damage. Infection during pregnancy increases a mother's risk of a still-birth or giving birth to a baby who dies shortly after birth. Untreated, an infant with congenital syphilis is a risk for developmental delays, seizures, or death.

National statistic: In 2006, rate of 12.5 per 100,000 Healthy People 2010 goal: 0.2 per 100,000 (Primary & Secondary)

**Primary & Secondary Syphilis Incidence Rates,
Baltimore City and Maryland 1997-2007**



Source: Baltimore City Health Department Bureau of STD/HIV Prevention; Maryland Data - Maryland Department of Health and Mental Hygiene, Community Health Administration, Division of Sexually Transmitted Diseases

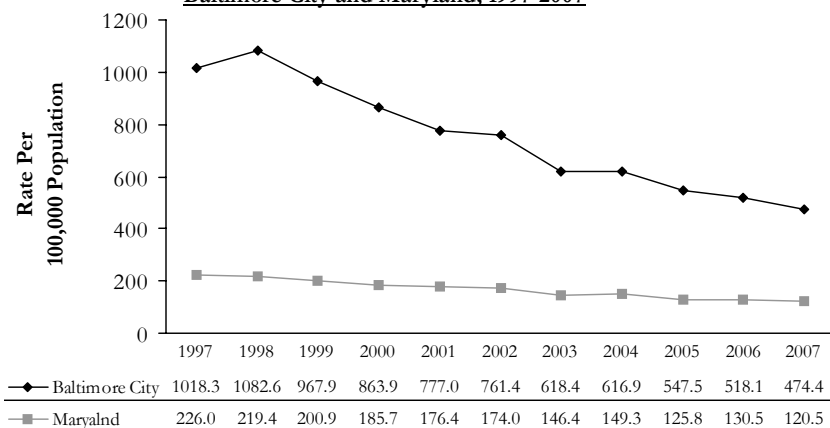
- After a dramatic decline in primary and secondary syphilis incidence following an outbreak which peaked in 1997, rates increased slightly among Baltimore City residents in 2003 and 2004. Since 2004 however, rates have declined to 21 per 100,000 residents.
- In 2007, primary and secondary syphilis incidence rates in Baltimore City were over three times higher than in Maryland.

Gonorrhea

Importance: Major cause of pelvic inflammatory disease (PID) among women in U.S. PID can lead to infertility, ectopic pregnancy, and chronic pelvic pain.

National statistic: In 2006, rate of 120.9 per 100,000 Healthy People 2010 goal: 19 new cases per 100,000

**Gonorrhea Incidence Rates,
Baltimore City and Maryland, 1997-2007**



Source: Baltimore City Health Department Bureau of STD/HIV Prevention; Maryland Data - Maryland Department of Health and Mental Hygiene, Community Health Administration, Division of Sexually Transmitted Diseases

- Over the past decade, gonorrhea incidence rates have decreased by 53% in Baltimore City.
- Despite this decrease, gonorrhea rates in Baltimore in 2007 were four times higher than in the state as a whole.

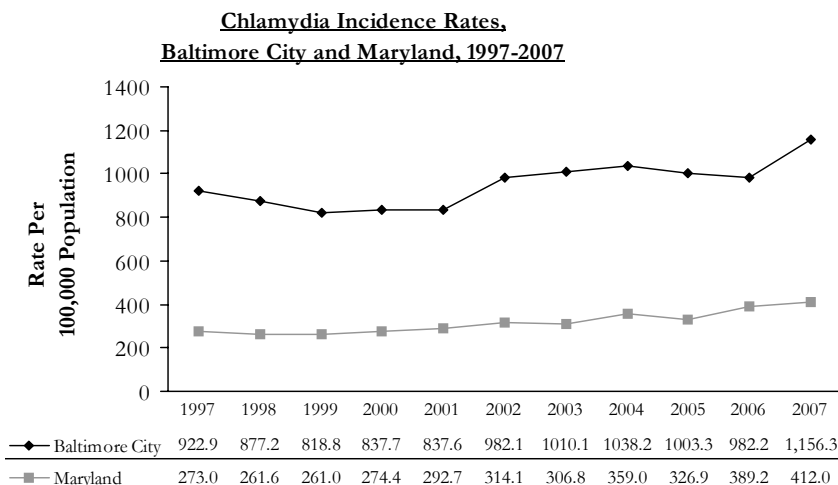
Infectious Diseases

Chlamydia

Importance: Chlamydia is the most frequently reported bacterial sexually transmitted infection in the U.S. Untreated infection can progress to serious reproductive and other health problems such as Pelvic Inflammatory Disease (PID).

National statistic: In 2006, 347.8 cases per 100,000

Healthy People 2010 goal: 3.0% for males and females age 15-24 attending STD or family planning clinics



Source: Baltimore City Health Department Bureau of STD/HIV Prevention; Maryland Data - Maryland Department of Health and Mental Hygiene, Community Health Administration, Division of Sexually Transmitted Diseases

- Over the past decade, chlamydia incidence rates have increased by 25% in Baltimore City.
- This increase is consistent with U.S. trends—some of the increase is most likely due to better detection of disease in women infected with chlamydia (an increase in testing, higher sensitivity of tests, and better reporting).
- Compared to Maryland, Baltimore City's chlamydia incidence rate was almost three times higher in 2007.

Other Reportable Diseases

Incidence of Selected Reportable Diseases, Baltimore City, 1998-2006

Reportable Infectious Disease	1998	1999	2000	2001	2002	2003	2004	2005	2006
Arboviral -- West Nile Virus	0	0	0	2	5	15	4	3	8
Campylobacteriosis	79	39	50	43	62	40	29	39	40
Cryptosporidiosis	6	2	1	16	7	4	10	7	11
E. coli O157:H7	3	1	2	1	4	0	0	10	1
Encephalitis	0	7	5	4	4	5	2	0	3
Giardiasis	20	27	23	21	18	23	28	31	28
Haemophilus influenzae Group	19	25	26	31	29	24	16	14	20
Legionellosis	7	7	15	5	8	28	16	26	30
Listeriosis	4	3	3	1	1	5	1	2	2
Malaria	4	10	7	9	9	6	7	5	8
Meningitis Aseptic & Other	83	78	144	190	154	205	115	163	75
Meningococcal	11	10	7	12	1	3	2	2	6
Mumps	0	2	4	1	0	0	0	0	1
Pertussis	15	19	16	8	5	6	12	89	53
Rocky Mountain Spotted Fever	2	1	2	1	1	1	4	3	2
Salmonella	148	145	142	120	225	157	152	142	161
Shigellosis	25	21	48	34	687	168	21	15	15
Vibrio (non-cholera)	1	1	2	2	4	4	3	2	3

Source: Baltimore City Health Department, Division of Acute and Communicable Diseases

Tuberculosis

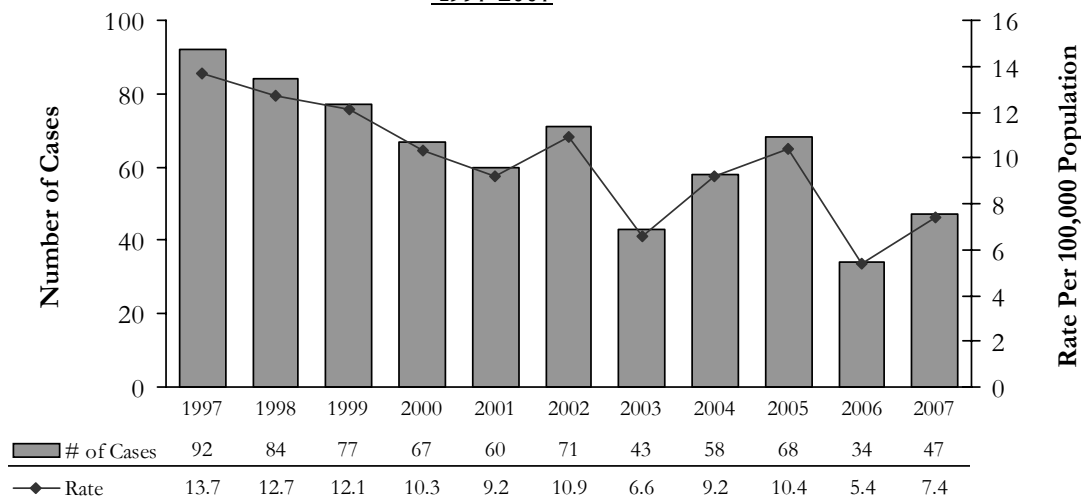
Importance: Tuberculosis (TB) is a chronic lung infection that, if not treated properly, can be fatal.

National statistic: In 2007, 4.4 cases reported per 100,000

Healthy People 2010 goal: 1.0 new case per 100,000

Tuberculosis Incidence and Incidence Rates, Baltimore City

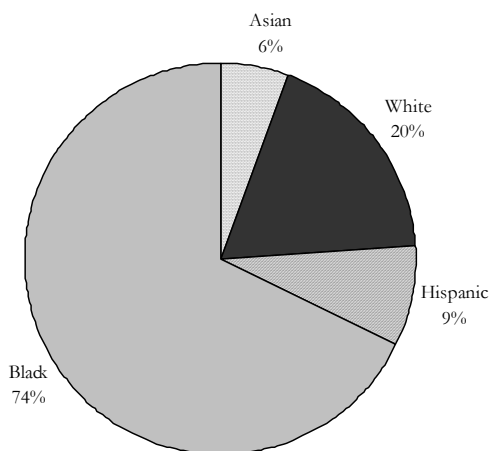
1997-2007



Source: Baltimore City Health Department, Tuberculosis Prevention and Control Program

- The rate of new tuberculosis cases (incidence) has decreased by almost 50% over the past decade in Baltimore City. Statewide, the tuberculosis incidence rate has decreased by almost 25% (from 6.3 per 100,000 in 1998 to 4.8 per 100,000 in 2007).
- While Hispanics and Asians made up approximately 2.5% and 2% of Baltimore City's population (according to Census data), they comprised 9% and 6% of new tuberculosis cases in 2007.

Incident Tuberculosis Cases by Race/Ethnicity, Baltimore City, 2007



Source: Baltimore City Health Department, Tuberculosis Prevention and Control Program