

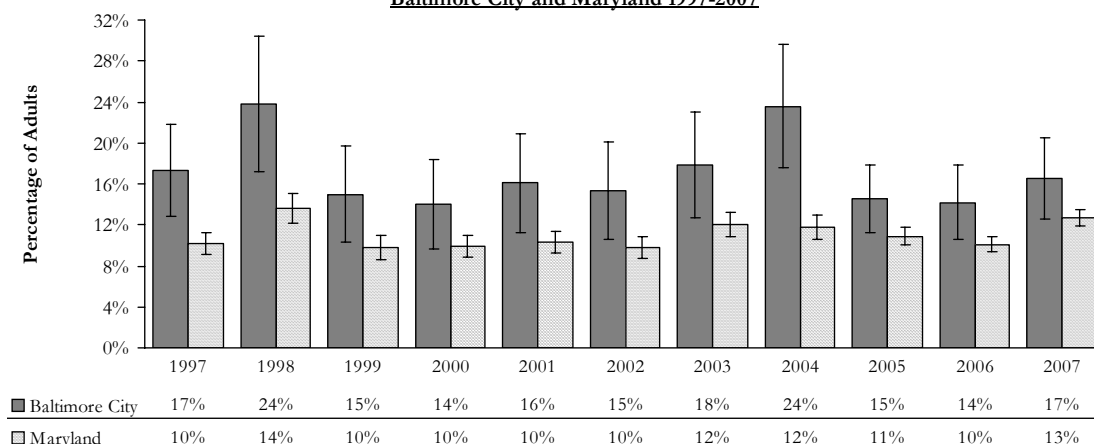
Health Care Access

Health Insurance Status

Importance: Health insurance status is an important factor in access to care; those uninsured are more likely to delay or forgo necessary treatment for illness.

National statistic: In 2007, 15.3% of Americans were uninsured. **Healthy People 2010 goal:** 100% of individuals have health insurance

**Percentage of Adults Who Do Not Have Healthcare Coverage (and 95% CI),
Baltimore City and Maryland 1997-2007**

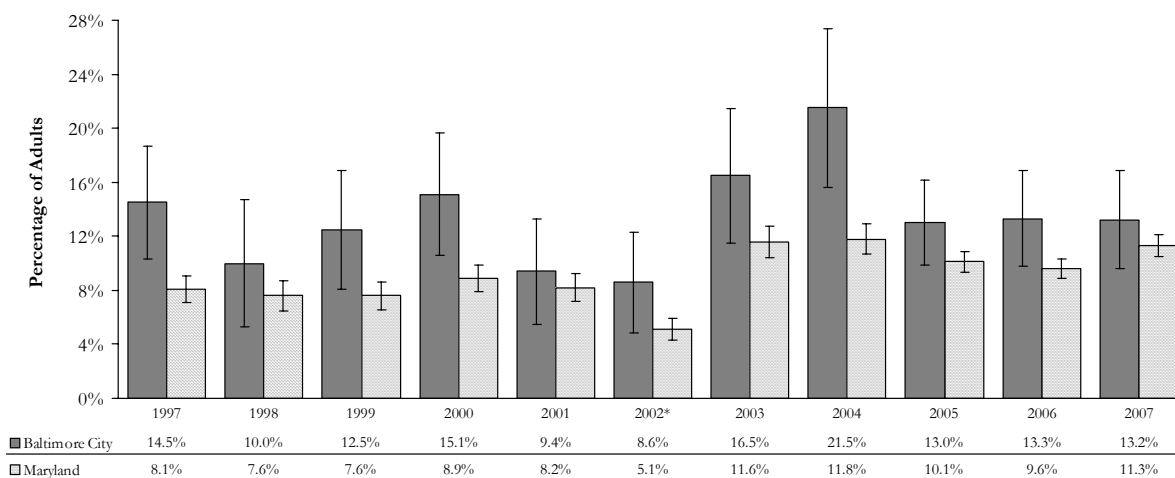


Source: Maryland Behavioral Risk Factor Surveillance System (BRFSS). See technical notes for a description of the BRFSS data and methodology (error bars represent a 95% confidence interval for the estimate). Survey respondents were asked if they had "any kind of health care coverage, including health insurance, prepaid plans such as HMOs, or government plans such as Medicare."

- Over the past decade, the percentage of Baltimore City adults surveyed who reported having no health insurance has been, on average, 6 percentage points higher than the proportion of Maryland adults without coverage. From 1997 to 2007, the percentage of Baltimore City adults surveyed who reported having no health insurance has been 17% on average.
- From 1997 to 2007, on average, 13% Baltimore City adults surveyed reported that they were not able to afford medical care which was greater than the percentage of Maryland adults unable to afford care (4 percentage points higher on average).

Access to Medical Care

Percentage of Adults Who Could Not Afford Medical Care, Baltimore City and Maryland 1997-2007



Source: Maryland Behavioral Risk Factor Surveillance System (BRFSS). See technical notes for a description of the BRFSS data and methodology (error bars represent a 95% confidence interval for the estimate). Question: "Was there a time in the past 12 months when you could not afford to see a doctor?" *2002 survey asked a slightly different question of respondents: "Was there a time in the past year when you needed medical care, but could not get it?"