

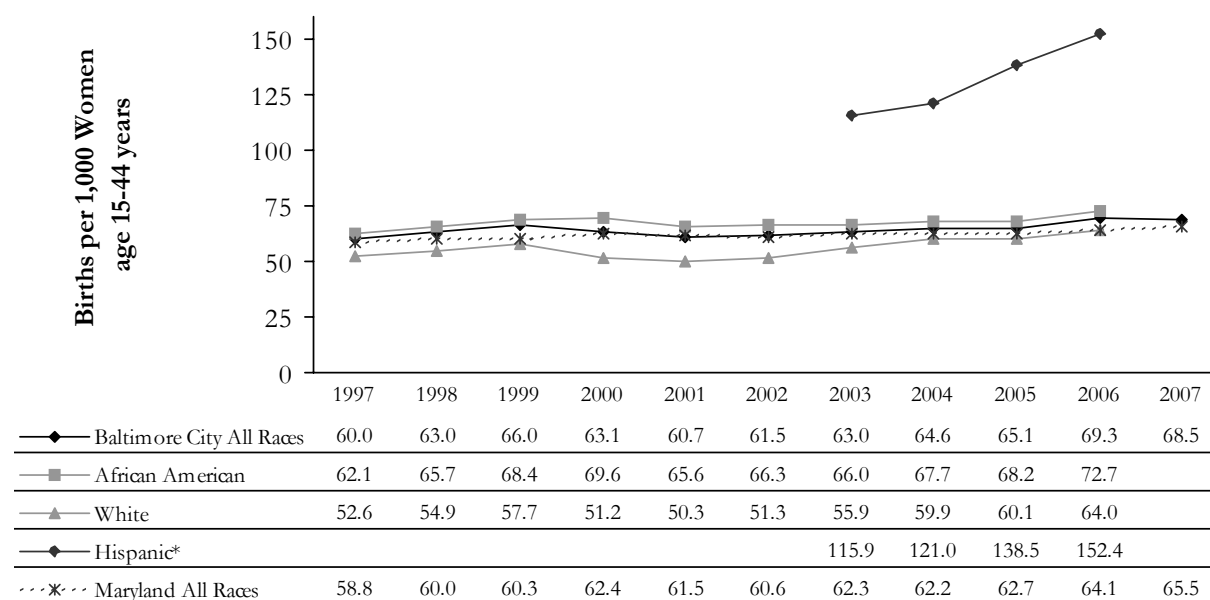
# Maternal and Infant Health

## Births

**General Fertility Rate:** The number of births per 1,000 women aged 15-44 years

**National statistic:** 68.5 births per 1,000 women aged 15-44 in 2006

**General Fertility Rate, Baltimore City by Race and Maryland 1997-2007**



Source: Maryland Department of Health and Mental Hygiene, Vital Statistics Annual Report (2007 data are preliminary and not yet available by race/ethnicity)

\*Includes all births to mothers of Hispanic origin of any race, data not available prior to 2003

- In 2007, 9,875 babies were born to Baltimore City residents, resulting in a crude birth rate of 15.5 per 1,000 total population and a general fertility rate of 68.5 per 1,000 women aged 15-44 years.
- Since 1997, the general fertility rate has increased by 14% in Baltimore City and by 11% in Maryland.
- Over the past decade the general fertility rate increased by 17% among African American women and 22% among white women in Baltimore City
- Hispanic women in Baltimore City had the highest general fertility rate in all years for which there are data\*. In 2006, the fertility rate among Hispanic women was two times as high as the rate for all Baltimore City women.

\*Note: Population denominator estimates (especially for small population groups) become less certain with each year between two decennial censuses (the most recent census was in 2000 and the next will be in 2010). An underestimate of the Baltimore City Hispanic female population age 15-44 could lead to an overestimated fertility rate in this group. In 2006, the birth rate among Hispanic women nationwide was 101.5 per 1,000 women age 15-44 years which was almost 50% higher than the rate among U.S. women of all races and ethnicities (68.5 per 1000 women age 15-44 years).