

# Baltimore City Seasonal Influenza Surveillance Report:

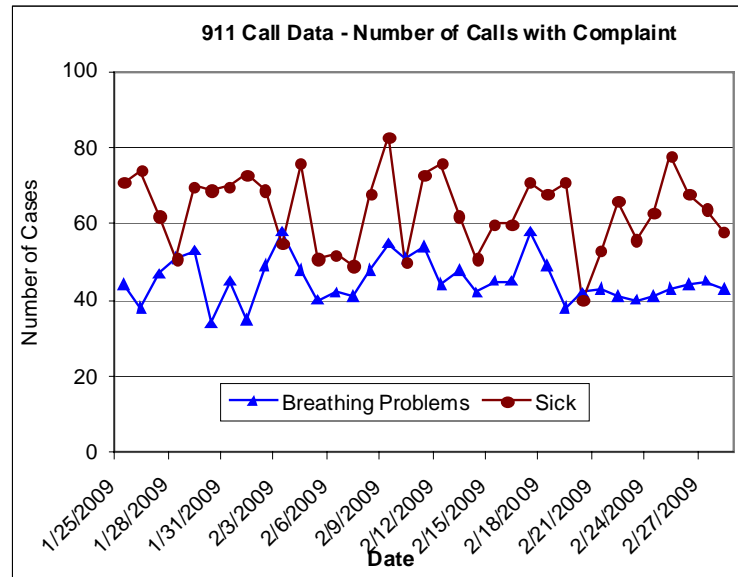
Week 08 - Week ending February 28, 2009



## This week's level: **Flu Alert**

- 17% of "rapid" influenza tests reported by Baltimore City sentinel laboratories this week were positive
- An outbreak of Influenza was reported at a long-term care facility in Baltimore City during week 8
- According to the Centers for Disease Control and Prevention, Influenza is widespread in several states surrounding Maryland. <http://www.cdc.gov/flu/weekly/>
- For information on preventing the flu (including vaccination), visit the Health Department website at [www.baltimorehealth.org/flu](http://www.baltimorehealth.org/flu) or call 311

during this period, graphed below. These numbers were consistent with this time period in previous years.



## SUMMARY

**Syndromic surveillance:**<sup>1</sup> During this period, 1.2% of visits reported by Baltimore City sentinel providers<sup>2</sup> were due to influenza-like-illness (ILI).<sup>3</sup> Although this is low, because one out of two providers reported this week, the number of over the counter sales of "Flu Medication" continues to rise steadily.

**Documented influenza:** There were seven-hundred forty-seven positive rapid flu tests, or 21% of all tests conducted by participating sentinel hospital laboratories<sup>5</sup> in Baltimore City and the Baltimore Metro Region.<sup>4</sup> There were no deaths due to influenza<sup>6</sup> and the number of deaths due to pneumonia and influenza were consistent with this same time period in past years.

## SYNDROMIC SURVEILLANCE

### 911 Call Data

There have been approximately 12 mentions of fever or flu-like symptoms in the text of 911 calls<sup>7</sup>

### Emergency Department Data

During the past two weeks, the number of patients presenting with chief complaints<sup>8</sup> of fever or flu-like symptoms was consistent with this time period in previous years.

### ILI Cases at Doctor's Offices

Table 1: Proportion of patient visits due to ILI from sentinel providers in Baltimore City and the Baltimore Metro Region

Week	No. of Reporting Sentinel Providers (Total)	Cases of ILI	Patients seen by reporting providers	% of patient visits due to ILI
<b>Baltimore City</b>				
08	1 (2)	5	428	1.2%
<b>Baltimore Metro Region</b>				
08	3 (7)	10	834	1.2%

### DOCUMENTED INFLUENZA

*Laboratory Confirmed Cases of Influenza*

Table 2: Percent of positive rapid flu tests from Baltimore City and the Baltimore Metro Region sentinel hospital laboratories

Week	No. of Reporting Labs (Total)	No. of Positive Tests	Total Tests Performed by Reporting Labs	% Positive for Flu
<b>Baltimore City</b>				
08	4 (4)	101	601	<b>16.8%</b>
<b>Baltimore Metro Region</b>				
08	13 (19)	646	2922	<b>22.1%</b>

*Institutional Outbreaks*

One institutional outbreak of influenza was reported in Baltimore City.

*Influenza and Pneumonia Mortality*

There were no deaths due to influenza and 11 deaths due to pneumonia. This constituted 6.8% of all deaths in Baltimore City during this time period, similar to the same time period during the years 2003-2007 when P&I mortality ranged from 7.0-11.5%.

**HOSPITAL CAPACITY DATA**

Yellow and red alert<sup>9</sup> levels for Baltimore City hospitals have been low during this period.

**NOTES**

<sup>1</sup>The main goal of syndromic surveillance is to identify illness clusters early, before diagnoses are confirmed and reported to public health agencies. Non-specific indicators of illness such as chief complaint data from emergency departments will provide early indications that flu activity in the community may be increasing.

<sup>2</sup>The Maryland Department of Health and Mental Hygiene (DHMH) collects data from sentinel providers throughout the state as part of the Centers for Disease Control and Prevention’s (CDC) national influenza surveillance program. The percent of patient visits due to influenza-like illness (ILI) is calculated as the total number of patients with ILI seen at all sentinel providers’ offices divided by the total number of patients seen at these practices. Not all sentinel providers report each week; the number reporting each week this period is documented in Table 1. Additionally, the number of providers reporting in the city is small and could result in fluctuations in the % of patient visits due to ILI.

<sup>3</sup>Influenza-Like Illness (ILI) is defined as a fever (temperature of 100°F [37.8°C] or greater) and a cough and/or a sore throat in the absence of a KNOWN cause other than influenza.

(<http://www.cdc.gov/flu/weekly/pdf/flu-surveillance-overview.pdf> - Last Accessed October 16<sup>th</sup>, 2007).

<sup>4</sup>The Baltimore Metropolitan Region includes Anne Arundel, Baltimore, Carroll, Harford, and Howard Counties, and Baltimore City.

<sup>5</sup>Data on the percent of positive rapid-flu tests are reported to the Health Department by DHMH on a weekly basis.

<sup>6</sup>The Baltimore City Health Department reports mortality due to influenza and pneumonia to the CDC on a weekly basis. Deaths for which pneumonia or influenza was listed as the underlying or contributing cause of death are counted in this report. These numbers represent deaths that occurred in Baltimore City (regardless of residence of the deceased). The date of death is usually within ~2-3 weeks of the report.

<sup>7</sup>The Biosurveillance Analyst at the Baltimore City Health Department receives 911 call data on a daily basis and analyzes these data for aberrations in the number of calls in which “breathing problems,” “sick,” “fever,” or “flu” are included in the text.

<sup>8</sup>Five Baltimore City emergency departments report chief complaint data to the Health Department’s Biosurveillance Analyst regularly. Based on historical data, the data are analyzed for aberrations in chief complaints of fever or flu-like syndromes.

<sup>9</sup>A hospital is on yellow alert when there are no available beds and ambulances are re-routed to a different hospital. Red alerts occur when the hospital has no available beds with EKG monitors and ambulances must be re-routed.

**MORE INFORMATION ON INFLUENZA SUREVILLANCE**  
 For more information on the Baltimore City Health Department’s Seasonal Influenza plan and for past reports, please visit our website:  
[www.baltimorehealth.org/flu](http://www.baltimorehealth.org/flu)

For information on influenza activity state-wide, please visit the DHMH’s Influenza surveillance program website:  
[http://edcp.org/influenza/Influenza\\_serv.html](http://edcp.org/influenza/Influenza_serv.html)

For information on influenza activity nation-wide, please visit the CDC’s website:  
<http://www.cdc.gov/flu/weekly/fluactivity.htm>