

# Baltimore City Seasonal Influenza Surveillance Report:

Weeks 01 and 02 - Two weeks ending  
January 17, 2009



## This week's level: **Minimal Flu**

- Little to no flu activity has been detected in Baltimore City
- For information on preventing the flu (including vaccination), visit the Health Department website at [www.baltimorehealth.org/flu](http://www.baltimorehealth.org/flu) or call 311

### SUMMARY

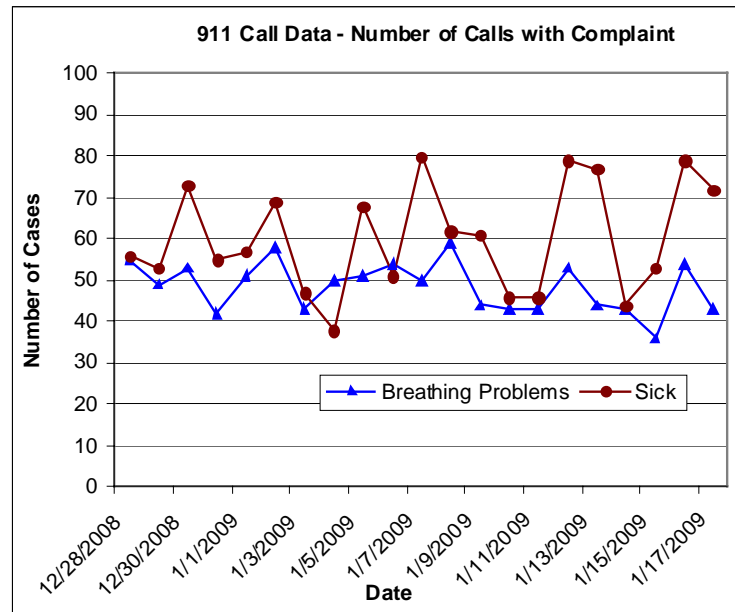
**Syndromic surveillance:**<sup>1</sup> During this period, 0.3%-1.0% of visits reported by Baltimore City sentinel providers<sup>2</sup> were due to influenza-like-illness (ILI).<sup>3</sup> There were no anomalies in the number of fever/flu complaints to Baltimore City emergency departments or the number of 911 calls with complaints of “breathing problems” or “sick” during this time period.

**Documented influenza:** There were thirty-four positive rapid flu tests reported by participating Baltimore City or Baltimore Metro Region<sup>4</sup> sentinel hospital laboratories.<sup>5</sup> There were no deaths due to influenza<sup>6</sup> and the number of deaths due to pneumonia and influenza were consistent with this same time period in past years.

### SYNDROMIC SURVEILLANCE

#### 911 Call Data

There have been approximately 9 mentions of fever or flu-like symptoms in the text of 911 calls<sup>7</sup> during this period. Numbers of daily calls for breathing problems and sick complaints are graphed below. These numbers were consistent with this time period in previous years.



#### Emergency Department Data

During the past two weeks, the number of patients presenting with chief complaints<sup>8</sup> of fever or flu-like symptoms was consistent with this time period in previous years.

#### ILI Cases at Doctor's Offices

Table 1: Proportion of patient visits due to ILI from sentinel providers in Baltimore City and the Baltimore Metro Region

Week	No. of Reporting Sentinel Providers (Total)	Cases of ILI	Patients seen by reporting providers	% of patient visits due to ILI
<b>Baltimore City</b>				
01	1 (2)	4	393	<b>1.0%</b>
02	1 (2)	1	368	<b>0.3%</b>
<b>Baltimore Metro Region</b>				
01	5 (7)	13	1670	<b>0.8%</b>
02	4 (7)	13	1347	<b>1.0%</b>

DOCUMENTED INFLUENZA

*Laboratory Confirmed Cases of Influenza*

Table 2: Percent of positive rapid flu tests from Baltimore City and the Baltimore Metro Region sentinel hospital laboratories

Week	No. of Reporting Labs (Total)	No. of Positive Tests	Total Tests Performed by Reporting Labs	% Positive for Flu
<b>Baltimore City</b>				
01	4 (4)	12	109	<b>11.0%</b>
02	4 (4)	2	97	<b>2.1%</b>
<b>Baltimore Metro Region</b>				
01	7 (9)	16	209	<b>7.7%</b>
02	7 (9)	4	178	<b>2.2%</b>

*Institutional Outbreaks*

No institutional outbreaks of influenza have been reported to the Baltimore City Health Department during this period.

*Influenza and Pneumonia Mortality*

There were no deaths due to influenza and 54 deaths due to pneumonia. This constituted 13.8% of all deaths in Baltimore City during this time period, similar to the same time period during the years 2003-2007 when P&I mortality ranged from 9.7-10.2%.

HOSPITAL CAPACITY DATA

Yellow and red alert<sup>9</sup> levels for Baltimore City hospitals have been low during this period.

NOTES

<sup>1</sup>The main goal of syndromic surveillance is to identify illness clusters early, before diagnoses are confirmed and reported to public health agencies. Non-specific indicators of illness such as chief complaint data from emergency departments will provide early indications that flu activity in the community may be increasing.

<sup>2</sup>The Maryland Department of Health and Mental Hygiene (DHMH) collects data from sentinel providers throughout the state as part of the Centers for Disease Control and Prevention's (CDC) national influenza surveillance program. The percent of patient visits due to influenza-like illness (ILI) is calculated as the total number of patients with ILI seen at all sentinel providers' offices divided by the total number of patients seen at these practices. Not all sentinel providers report each week; the number reporting each week this period is documented in Table 1. Additionally, the number of

providers reporting in the city is small and could result in fluctuations in the % of patient visits due to ILI.

<sup>3</sup>Influenza-Like Illness (ILI) is defined as a fever (temperature of 100°F [37.8°C] or greater) and a cough and/or a sore throat in the absence of a KNOWN cause other than influenza. (<http://www.cdc.gov/flu/weekly/pdf/flu-surveillance-overview.pdf> - Last Accessed October 16<sup>th</sup>, 2007).

<sup>4</sup>The Baltimore Metropolitan Region includes Anne Arundel, Baltimore, Carroll, Harford, and Howard Counties, and Baltimore City.

<sup>5</sup>Data on the percent of positive rapid-flu tests are reported to the Health Department by DHMH on a weekly basis.

<sup>6</sup>The Baltimore City Health Department reports mortality due to influenza and pneumonia to the CDC on a weekly basis. Deaths for which pneumonia or influenza was listed as the underlying or contributing cause of death are counted in this report. These numbers represent deaths that occurred in Baltimore City (regardless of residence of the deceased). The date of death is usually within ~2-3 weeks of the report.

<sup>7</sup>The Biosurveillance Analyst at the Baltimore City Health Department receives 911 call data on a daily basis and analyzes these data for aberrations in the number of calls in which "breathing problems," "sick," "fever," or "flu" are included in the text.

<sup>8</sup>Five Baltimore City emergency departments report chief complaint data to the Health Department's Biosurveillance Analyst regularly. Based on historical data, the data are analyzed for aberrations in chief complaints of fever or flu-like syndromes.

<sup>9</sup>A hospital is on yellow alert when there are no available beds and ambulances are re-routed to a different hospital. Red alerts occur when the hospital has no available beds with EKG monitors and ambulances must be re-routed.

**MORE INFORMATION ON INFLUENZA SUREVILLANCE**  
 For more information on the Baltimore City Health Department's Seasonal Influenza plan and for past reports, please visit our website:  
[www.baltimorehealth.org/flu](http://www.baltimorehealth.org/flu)

For information on influenza activity state-wide, please visit the DHMH's Influenza surveillance program website:  
[http://edcp.org/influenza/Influenza\\_serv.html](http://edcp.org/influenza/Influenza_serv.html)

For information on influenza activity nation-wide, please visit the CDC's website:  
<http://www.cdc.gov/flu/weekly/fluactivity.htm>